

# HONG KONG WINFIELD TRADING LIMITED

High Pressure Laminate Collection



*The Global Spreader In Engineered Surfaces*



# COMPANY PROFILE :

## 關於溫菲爾德

Hong Kong Winfield Trading Limited is a comprehensive enterprise which has integrated with high pressure laminate factory, plank factory, panel processing factory and design decoration company. With more than 20 years experience in the international brand name products, our professional management team actively gets engaged in promoting the one-stop solution for integral decorative project, and integrated services include space design, production of decorative materials, materials processing and product construction. The products are widely used in furniture, home decoration, decorations in hospital, school, commercial space and other public places. At present, HK Winfield has more than 50 core technologies, including 6 domestic patents, 1 international patent.

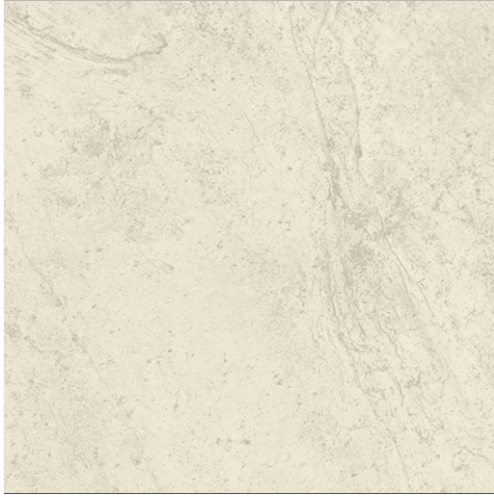
In addition, HK Winfield has built comprehensive sales and logistics service system with many years of successful experiences. These services cover Mainland China, Hong Kong, North America and most regions of "One Belt One Road" .

香港溫菲爾德貿易有限公司整合了高壓裝飾板廠、木質基材廠、板材加工廠及多家設計裝修公司。國際品牌專業銷售團隊擁有20年以上的行業經驗,致力於推廣整體裝修的一站式解決方案,提供包含空間設計、飾材生產、材料加工、產品施工的綜合服務。產品廣泛應用於傢俱、家庭裝修、醫院、學校及商業空間等公共場所的裝飾裝修。公司自主研發了50余項核心技術,其中國內發明專利6項、國際專利1項。多年成功的團隊運營經驗造就了完備的銷售服務和倉儲物流服務體系,這些服務覆蓋了中國大陸、香港、北美及“一帶一路”的大部分地區。

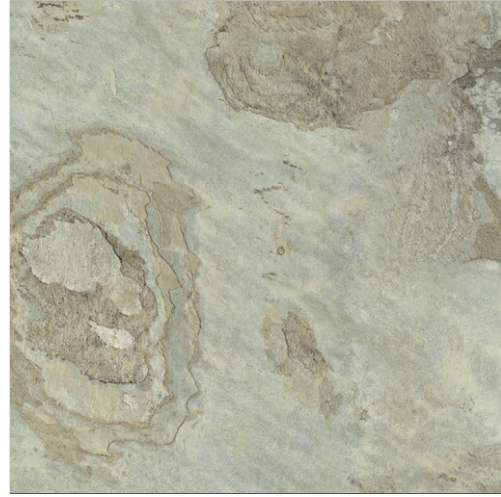
# STONES LAMINATE

## 石紋系列

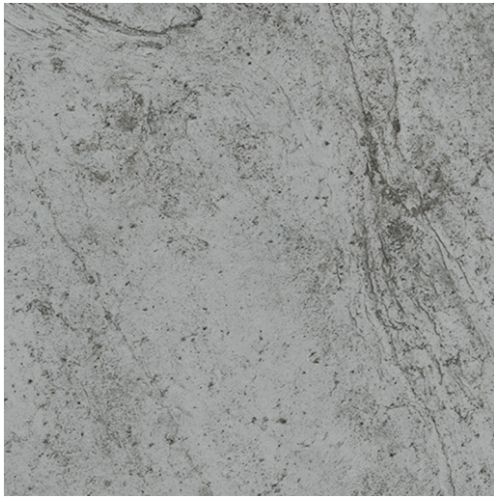
----- 粗曠逼真 天然版畫



62293



62297



62295



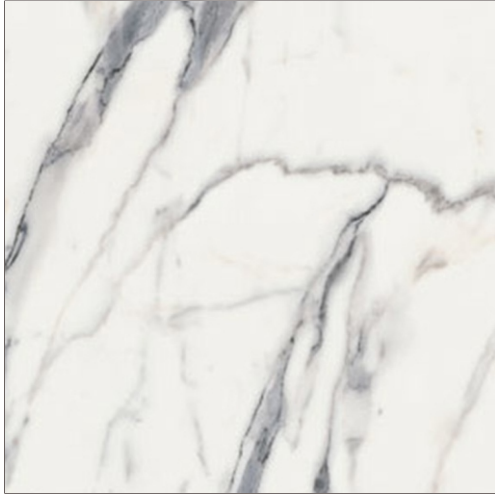
62298



62300



62296



63810



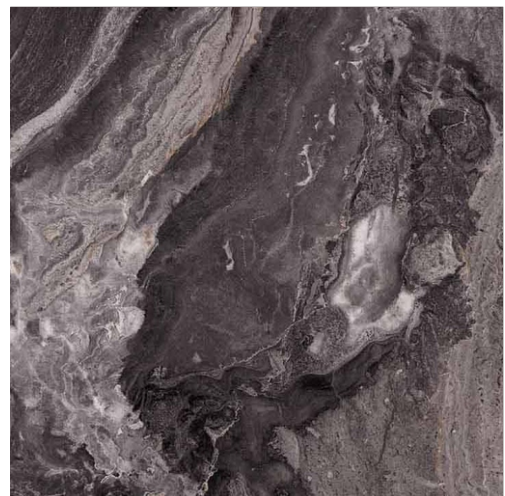
62294



62292



62299



62195

# WOODGRAINS LAMINATE

## 木紋系列

----- 森林的記憶 生命的年輪



27672-NT



28904-NT



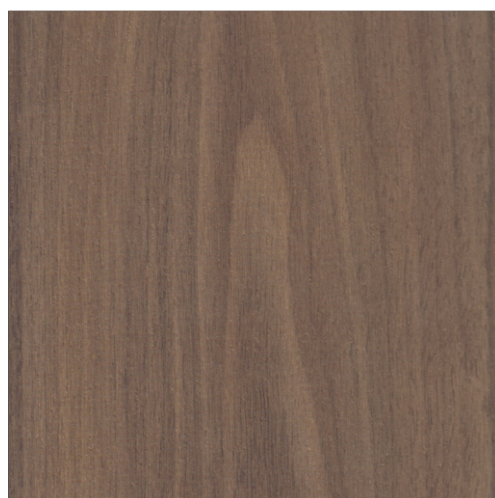
28854-XNT



28194-NT



26401-NT



26402-NT



27182-NT



29010-NT



28834-NT



28842-NT



20861-NT



25887-NT



20860-NT



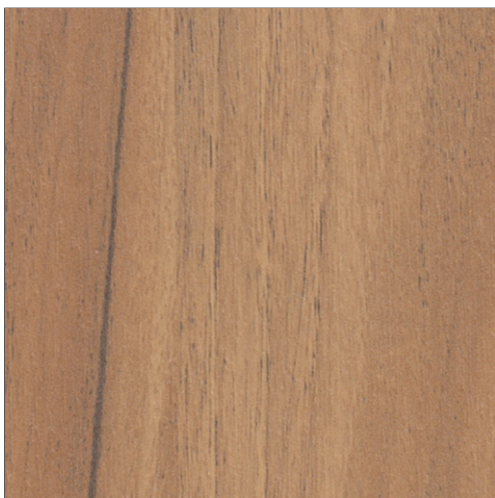
29005-NT



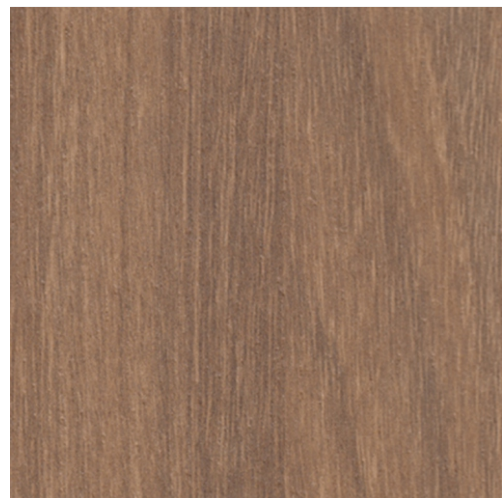
25483-NT



20867-NT



25486-NT



28846-NT



26930-NT



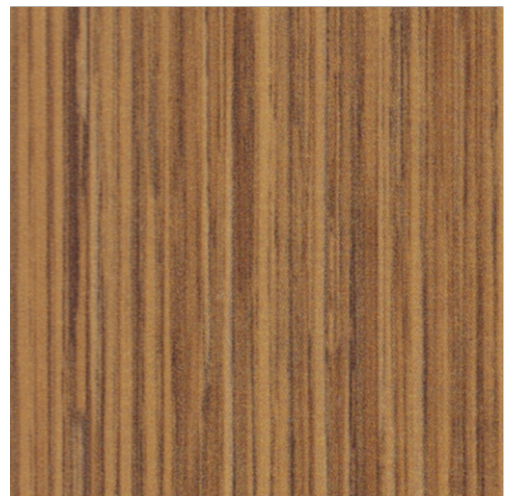
28844-NT



29348-NT



28853-NT



23699-NT



88634-3



29393-3



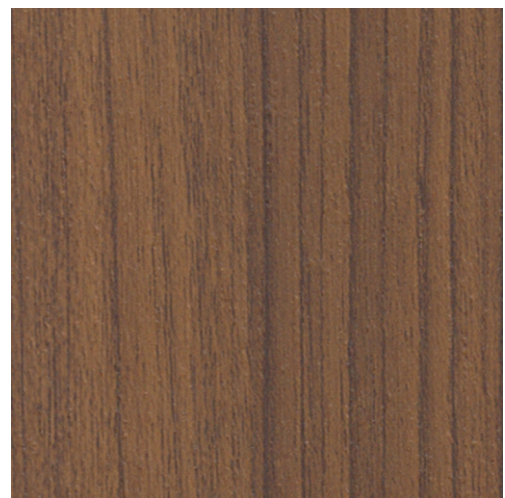
29011-3



22567-3



29205-NT



29398-NT



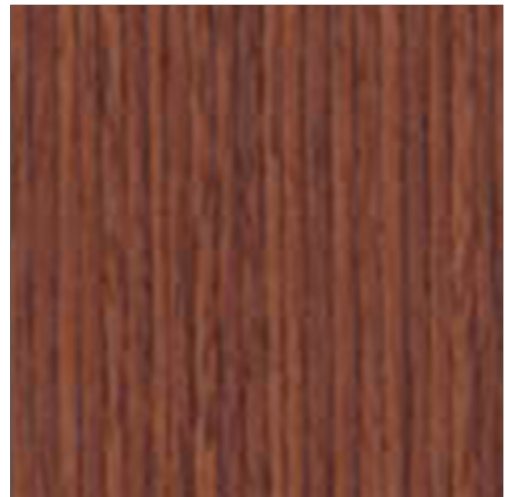
29392-3



27369-3



26213-3



26928-3





29966-3



27012-3



519108-3



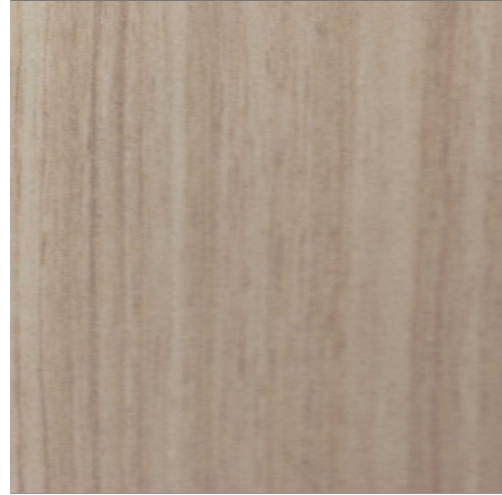
22726-3



20756-3



25478-3



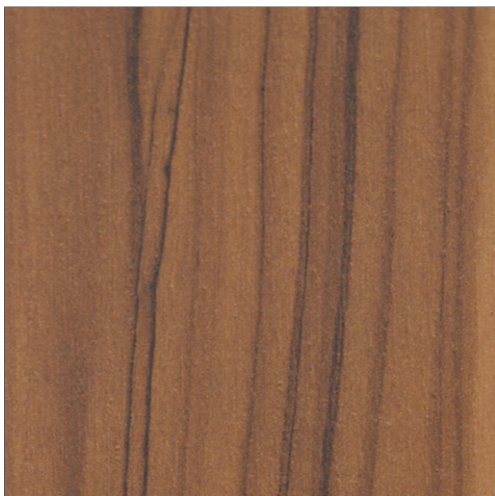
24192-3



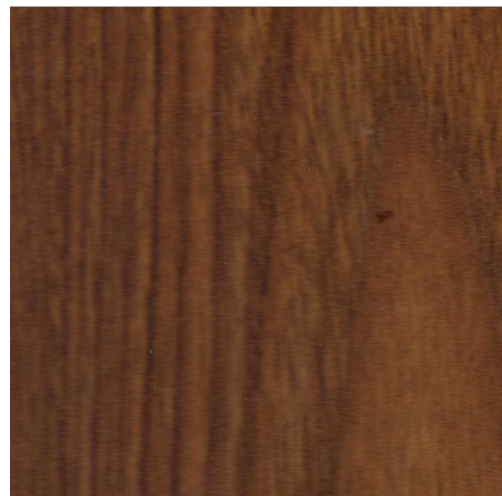
25487-3



25485-3



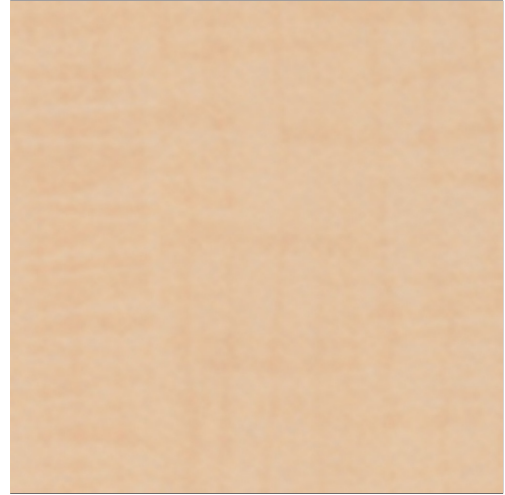
25481-3



27209-3



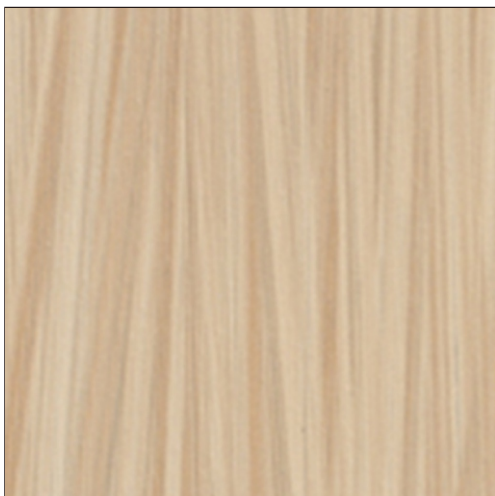
29016-3



21143-3



21395-3



26212-3



27670-3



26410-3



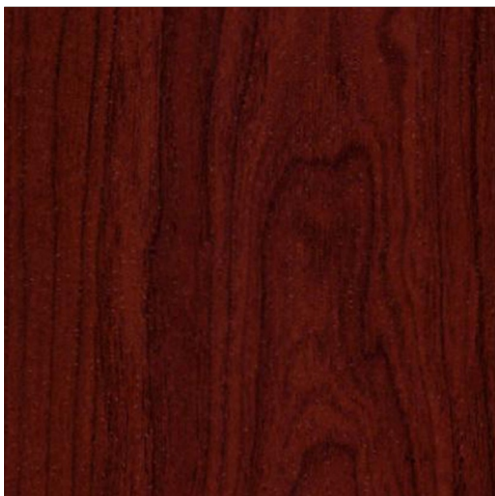
26210-3



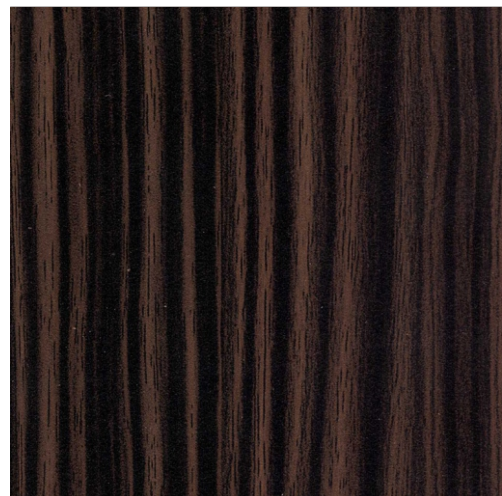
25904-3



63802-3



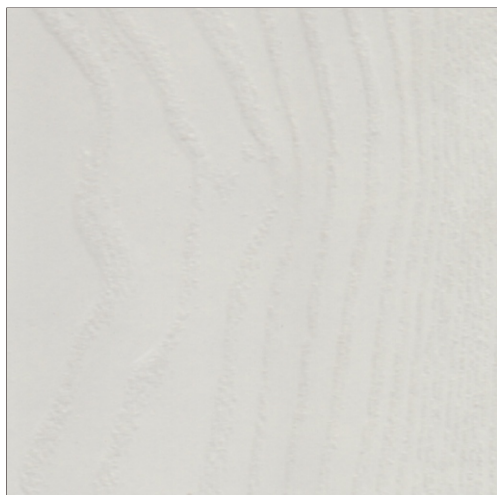
27759-3



29012-3

EMBOSED LAMINATE  
浮雕系列

----- 自然的紋理 雕刻著歲月



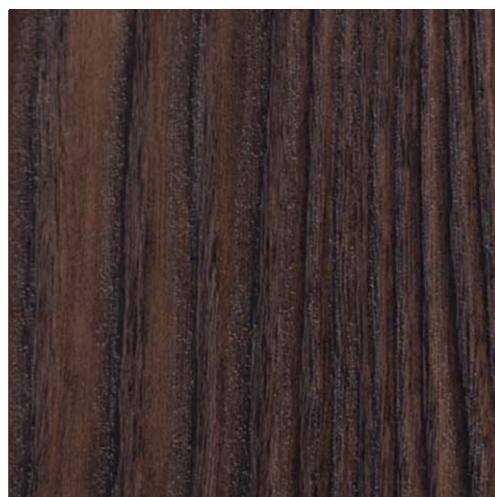
61002-S1



68204-S1



63131-S1



63124-S1





61002-S2



63302-S2



63301-S2



63307-S2





69568-S18



68207-S18



69569-S18



68157-S18





63924-S3



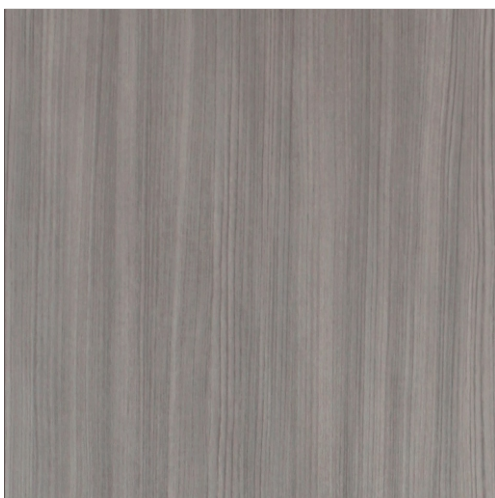
63920-S3



63482-T<sub>1</sub>



63326-S3



20812-T<sub>1</sub>



63328-S3

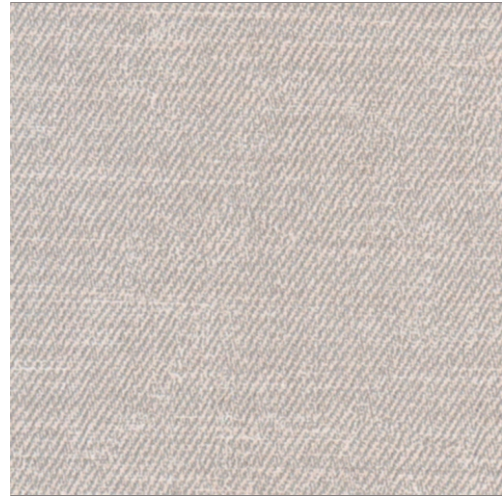
# FABRIC LAMINATE

## 布纹系列

-----純樸的質感 溫馨的港灣



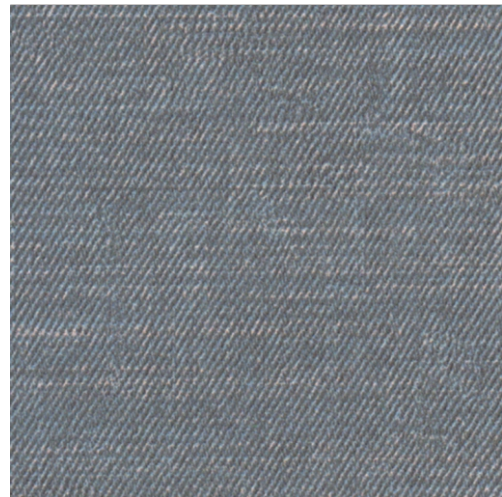
62197



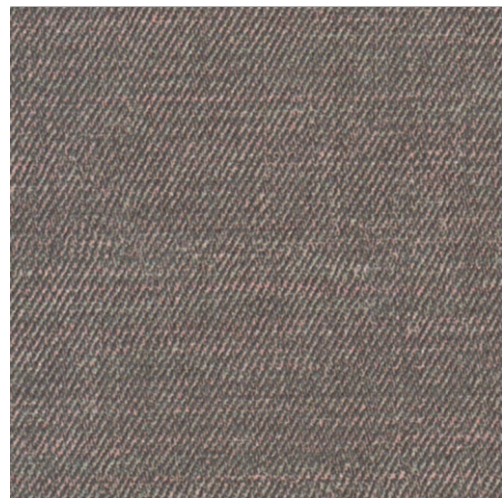
62198



26444



62200



62199



25475-T<sub>1</sub>



25264-T<sub>1</sub>



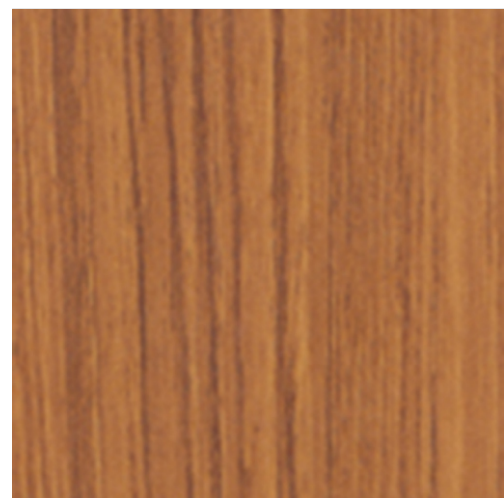
63443-HNT



63539-HNT



63083-HNT

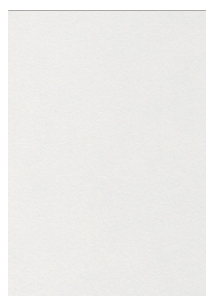


63200-HNT

# SOLID COLORS LAMINATE

純色系列

----- 色彩斑斕 花樣年華



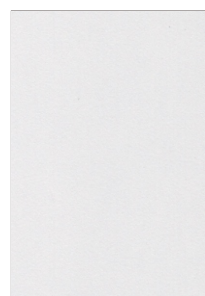
61090



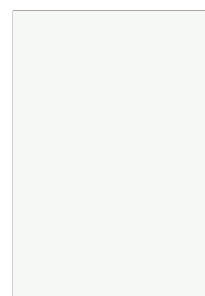
61109



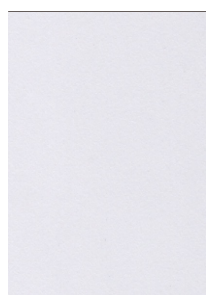
61085



61104



5D354



61058



61105



61077



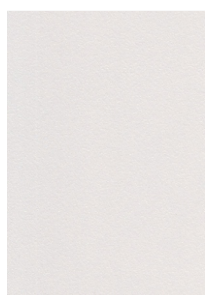
61088



61112



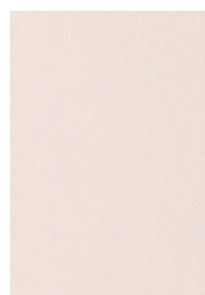
61071



61110



61107



61108



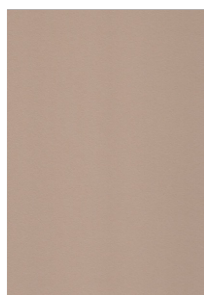
61070



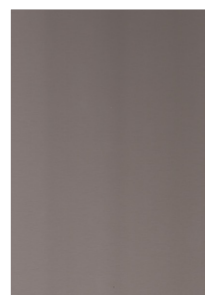
61106



61111



61097



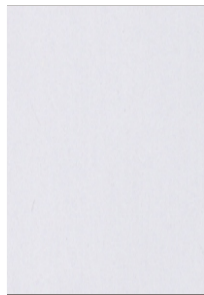
61095



22200



20949



61799



61798



61797



61073



61074



61099



61061



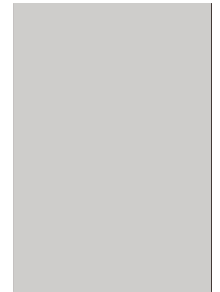
61065



61089



61091



20927



61796



61040



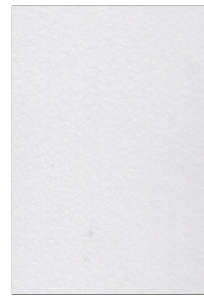
61001



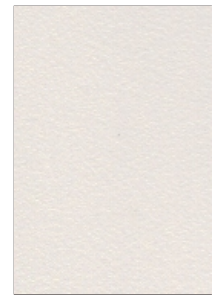
61078



61087



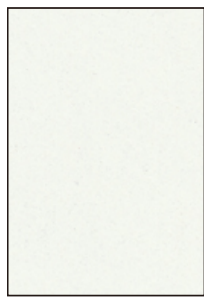
61056



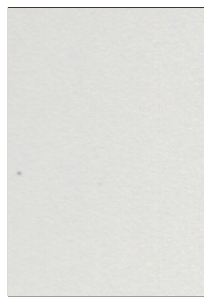
61004



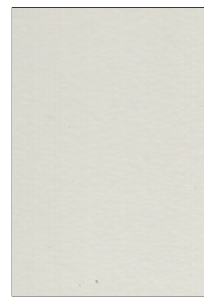
61057



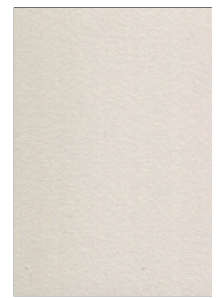
61052



61002



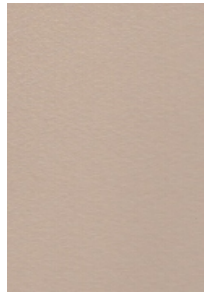
61042



61003



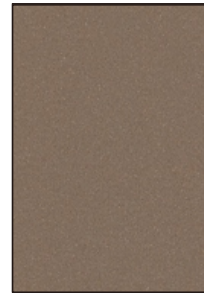
61045



61068



61096



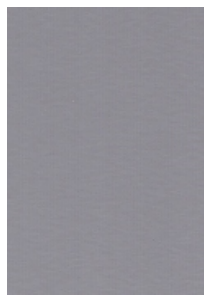
61054



61006



61007



61008



61011



61012



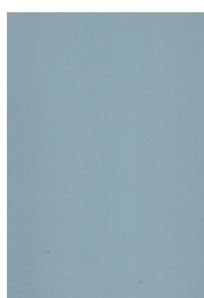
61028



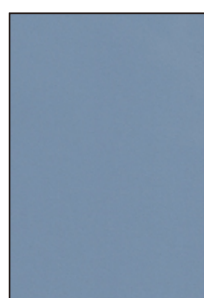
61009



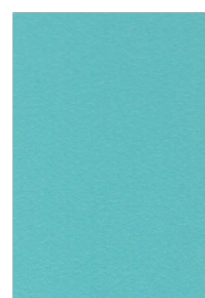
61043



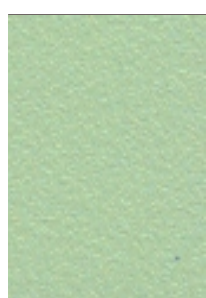
61092



61050



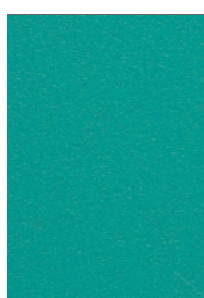
61018



61017



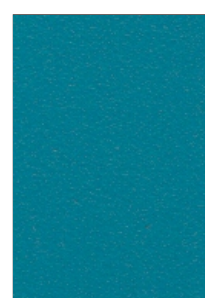
20803



61019



61021



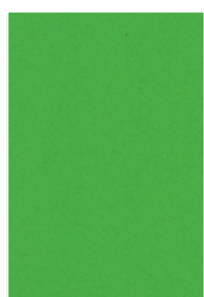
61023



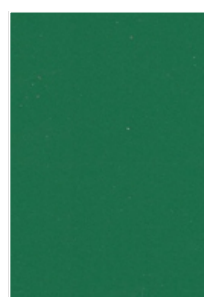
61094



61795



61022



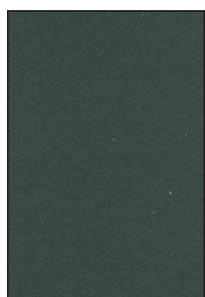
61020



61067



61053



61024



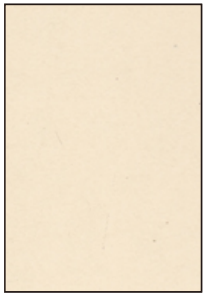
61033



61039



61034



61005



61038



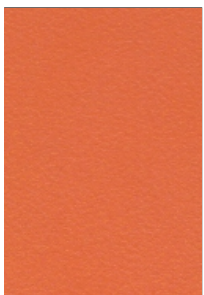
61025



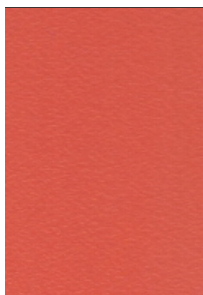
61026



61037



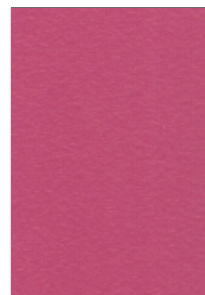
61027



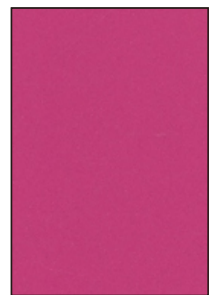
61031



61029



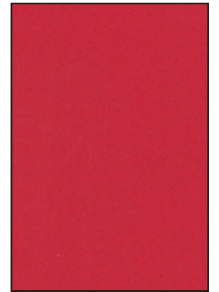
61035



61030



61044



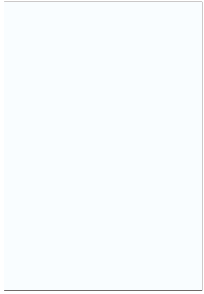
61032



28200



61036



20459



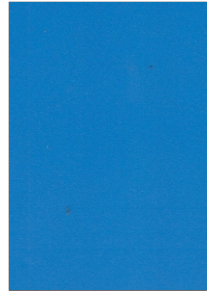
61794



61086



61013



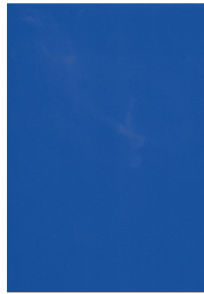
61010



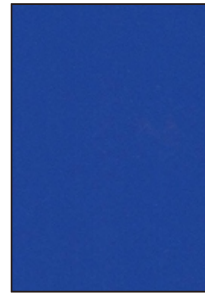
61093



61051



61041



61014



61015



SURFACE TEXTURES  
表面肌理



2



3C



CE



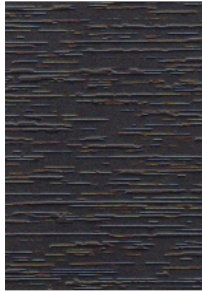
ES



HE



NT



HNT



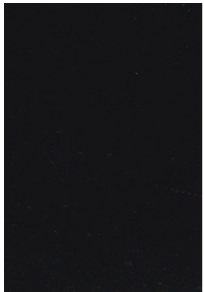
k



Q



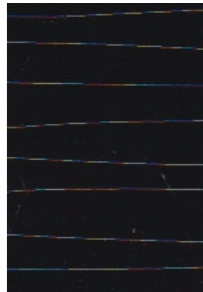
W



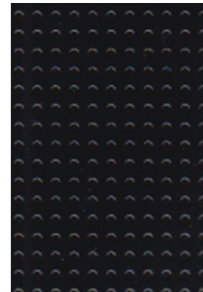
X



Y



z



HI



T1



S1



S2



S3



S18



S28

# NEW ARRIVALS

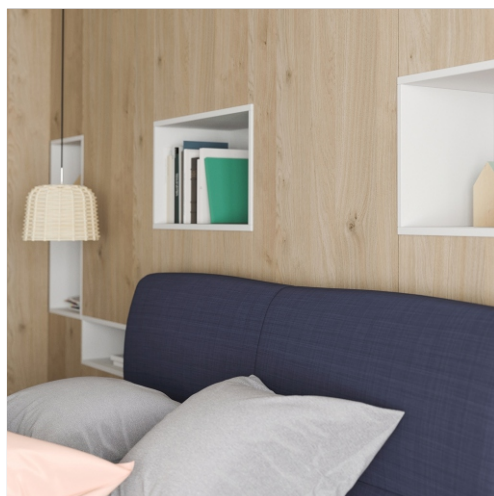
## 新品推薦



85885-P



61281-NT





Hong Kong Winfield Laminates are suitable for a diversity of applications. The collection also provides Compact Internal Corner and External Corner with a series of specifications.

香港溫菲爾德的產品適用於多種領域，包括定制各種尺寸的抗倍特拐角。

Specification	Unit	In Millimeter
3x7	feet	915mmx2150mm
4x6	feet	1220mmx1830mm
4x8	feet	1220mmx2440mm
4x10	feet	1220mmx3050mm
4.3x9.3	feet	1300mmx2800mm
4.3x10	feet	1300mmx3050mm
5x6	feet	1525mmx1830mm
5x8	feet	1525mmx2400mm
5x10	feet	1525mmx3050mm
5x12	feet	1525mmx3660mm
5.2x10.5	feet	1600mmx3200mm
6x6	feet	1830mmx1830mm
6x8	feet	1830mmx2440mm
6x12	feet	1830mmx3660mm
7x10	feet	2000mmx3050mm



[www.hkwinfield.com](http://www.hkwinfield.com)