

# HONG KONG WINFIELD TRADING LIMITED

High Pressure Laminate Collection



*The Global Spreader In Engineered Surfaces*



# COMPANY PROFILE :

## 關於溫菲爾德

Hong Kong Winfield Trading Limited is a comprehensive enterprise which has integrated with high pressure laminate factory, plank factory, panel processing factory and design decoration company. With more than 20 years experience in the international brand name products, our professional management team actively gets engaged in promoting the one-stop solution for integral decorative project, and integrated services include space design, production of decorative materials, materials processing and product construction. The products are widely used in furniture, home decoration, decorations in hospital, school, commercial space and other public places. At present, HK Winfield has more than 50 core technologies, including 6 domestic patents, 1 international patent.

In addition, HK Winfield has built comprehensive sales and logistics service system with many years of successful experiences. These services cover Mainland China, Hong Kong, North America and most regions of "One Belt One Road" .

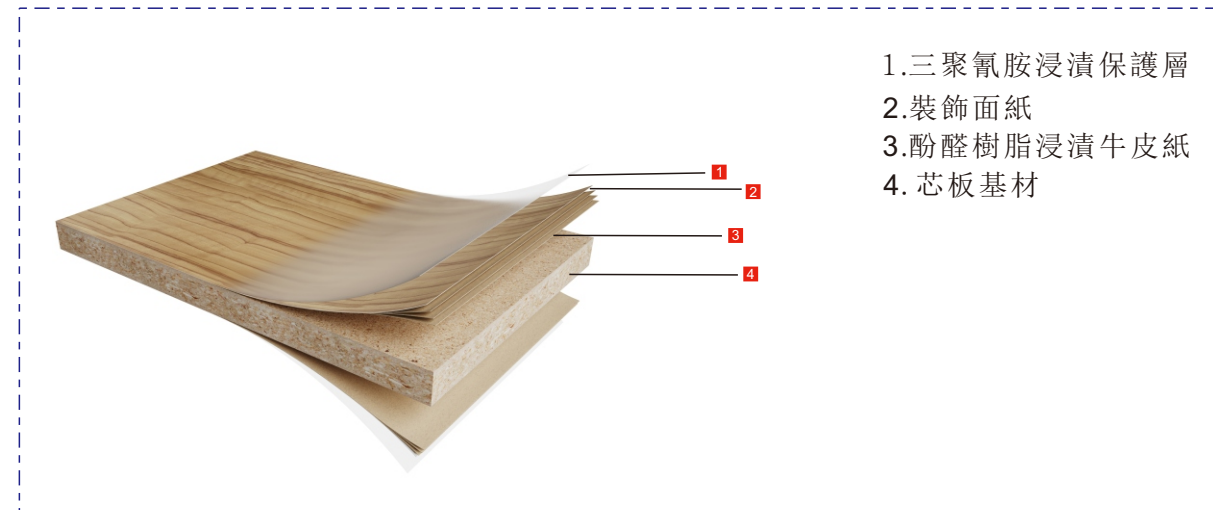
香港溫菲爾德貿易有限公司整合了高壓裝飾板廠、木質基材廠、板材加工廠及多家設計裝修公司。國際品牌專業銷售團隊擁有20年以上的行業經驗,致力於推廣整體裝修的一站式解決方案,提供包含空間設計、飾材生產、材料加工、產品施工的綜合服務。產品廣泛應用於傢俱、家庭裝修、醫院、學校及商業空間等公共場所的裝飾裝修。公司自主研發了50余項核心技術,其中國內發明專利6項、國際專利1項。多年成功的團隊運營經驗造就了完備的銷售服務和倉儲物流服務體系,這些服務覆蓋了中國大陸、香港、北美及“一帶一路”的大部分地區。

# HK WINFIELD

## HIGH PRESSURE LAMINATE

### 香港溫菲爾德耐火裝飾板簡介

香港溫菲爾德貿易有限公司生產銷售的高壓耐火裝飾板系列 ( Decorative High-Pressure Laminates Sheets Made From Thermosetting Resins ) 是經久耐用的表面裝飾用耐火建材,具有耐高溫、耐衝擊、耐刮擦、耐腐蝕、耐蟲蛀、耐潮濕等產品性能。被廣泛應用於掛牆、傢俱、櫥櫃、隔斷、檯面、室內門、包柱等室內室外裝修。



產品擁有豐富的表面色彩及紋路,如單色、木紋、花色、石紋、鏤射、金屬拉絲等系列。可搭配多種表面肌理如柔光、高光、麻面、浮雕、鏤空、油漆面等近二百種。多樣化的花色與肌理搭配出極佳的觀感體驗,個性化的私人定制列印出別樣的詩意空間。

Specification	Unit	In Millimeter
3x7	feet	915mmx2150mm
4x6	feet	1220mmx1830mm
4x8	feet	1220mmx2440mm
4x10	feet	1220mmx3050mm
4.3x9.3	feet	1300mmx2800mm
4.3x10	feet	1300mmx3050mm
5x6	feet	1525mmx1830mm
5x8	feet	1525mmx2400mm
5x10	feet	1525mmx3050mm
5x12	feet	1525mmx3660mm
5.2x10.5	feet	1600mmx3200mm
6x6	feet	1830mmx1830mm
6x8	feet	1830mmx2440mm
6x12	feet	1830mmx3660mm
7x10	feet	2000mmx3050mm





## 溫菲爾德產品介紹

按性能和用途分為:

1. **普通裝飾系列**：薄型單面產品,配合奧松板、集成材、顆粒板、細木工板、多層板及阻燃版等基材加工成具有卓越耐高溫性能的裝飾板材。
2. **抗倍特系列**：厚度在4-12mm厚的雙面裝飾板,兩面裝飾面的紋路和肌理均可自由選擇。抗倍特板堅固耐用,不僅是裝飾材料,更是結構材料,搭配不銹鋼等五金件可組成不同系列的儲物櫃、隔斷、牆面。厚度較低的可粘貼於基材上,厚度超過6mm一般採用掛牆方式安裝,同時生產與掛牆板配套的彎角產品。
3. **耐腐蝕理化板系列**：厚度一般在12.7mm左右,裝飾面採用特殊的耐腐蝕樹脂體系。具有抗倍特產品特點外,還主要具有耐酸、堿、有機溶劑、強氧化劑腐蝕的特性。
4. **後成型(彎曲板)系列**：多為薄型單面裝飾,在粘貼於基材上後可通過加熱在後成型機中成型,彎曲成需要的弧度和形狀。
5. **鎂晶醫療板系列**：氧化鎂、氯化鎂等無機防火基材經特殊工藝加工,雙面貼面裝飾,多用於醫療空間、商業空間、教育空間等公共空間, A1級防火。
6. **冰火板系列(纖維水泥板)**：纖維、水泥等無機防火基材經特殊工藝加工,雙面貼面裝飾,側面細膩美觀,多用於商業空間、新型住宅、工業建築等處, A1級防火。
7. **倍安特產品系列**：採用無機玻璃纖維、填料與有機樹脂製成基材後與貼面紙、裝飾紙經高溫高壓模壓成型的雙面裝飾, B1級防火。
8. **抗靜電板系列**：浸漬樹脂採用特殊工藝,可保證產品的面電阻 $\leq 10^7\Omega$ ,體電阻 $\leq 10^8\Omega$ 。
9. **外牆板(耐曬)系列**：採用德國外牆膜,以醇溶性酚醛樹脂浸漬的木漿紙為基紙,產品耐候性、耐紫外線性能極佳。
10. **異形檯面系列**：採用異形模具代替模板,一次高溫高壓成型。
11. **防火門系列**：鋼制防火門、木質防火門、防火門製作用材及防火門五金配件。
12. **定制門板系列**：櫥櫃、衣櫃、書櫃、櫥櫃門板、大門板及衛生間擴展門等。





HOUSING APPLICATION

# 家居空间应用



COMMERCIAL APPLICATION

# 商业空间应用



# 机构空间应用

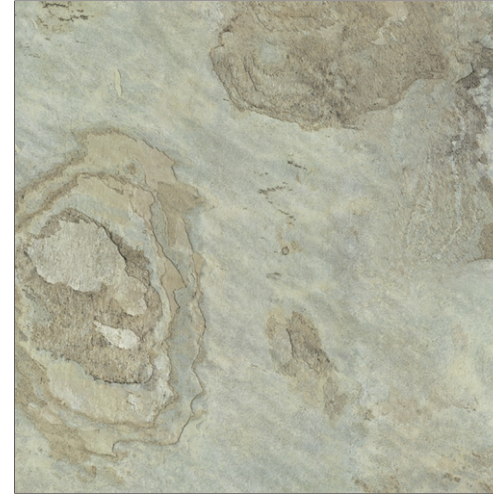


STONES LAMINATE  
石紋系列

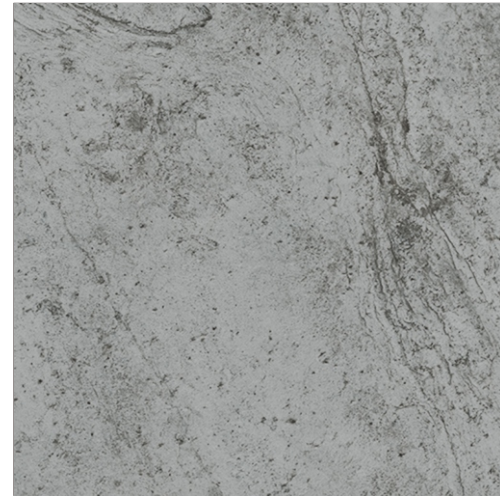
----- 粗曠逼真 天然版畫



62293



62297



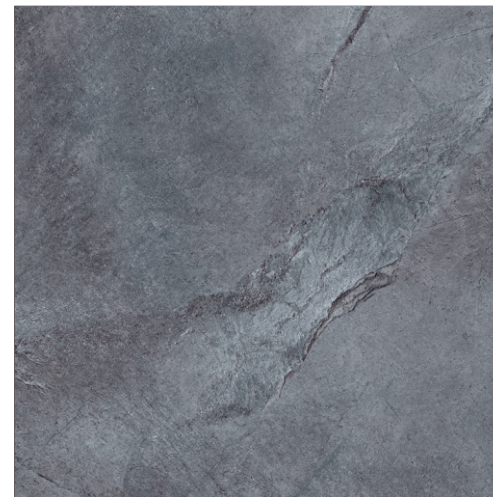
62295



62298



62300



62296



63810



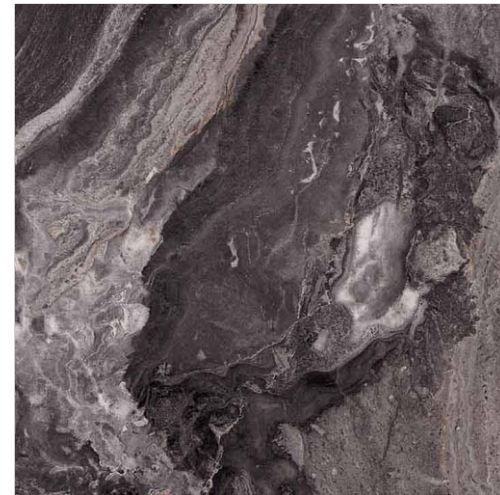
62294



62292



62299



62195

WOODGRAINS LAMINATE

木紋系列

----- 森林的記憶 生命的年輪



27672-NT



28904-NT



28854-XNT



28194-NT



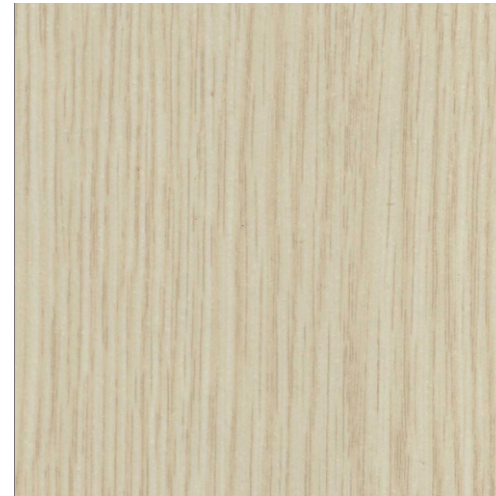
26401-NT



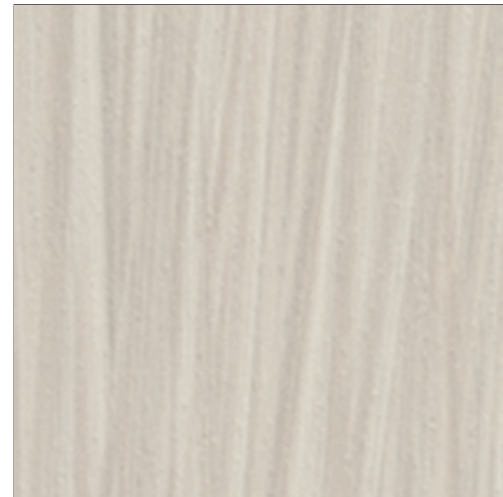
26402-NT



27182-NT



29010-NT



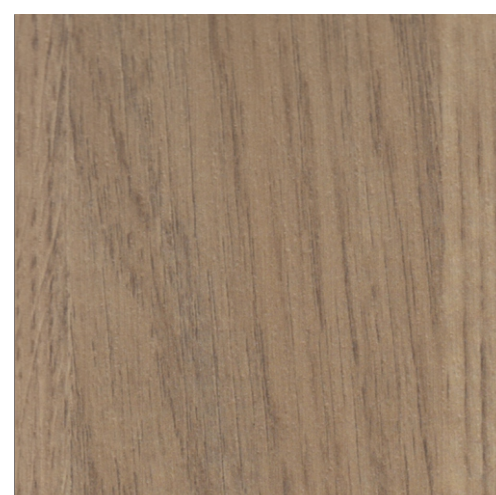
28834-NT



28842-NT



20861-NT



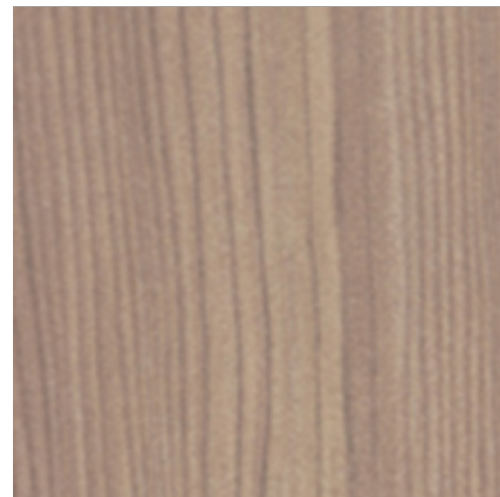
25887-NT



20860-NT



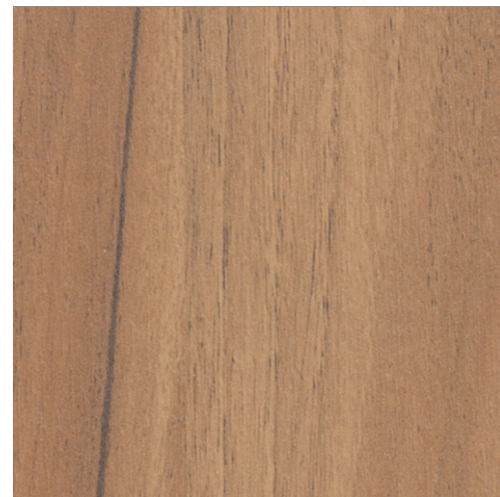
29005-NT



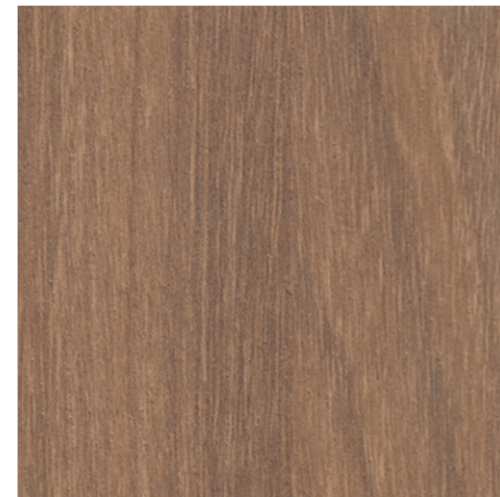
25483-NT



20867-NT



25486-NT



28846-NT



26930-NT



28844-NT



61281-NT



28853-NT



29348-NT



23699-NT



88634-3



29393-3



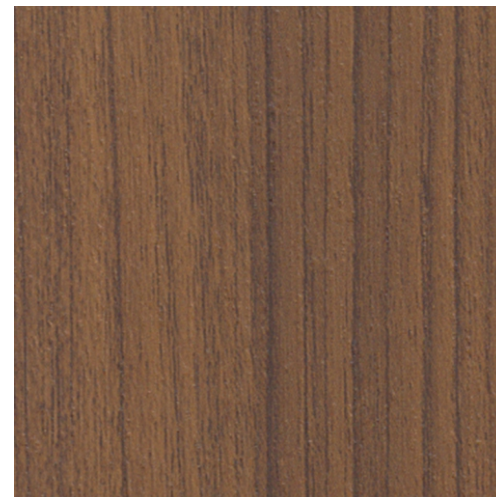
29011-3



22567-3



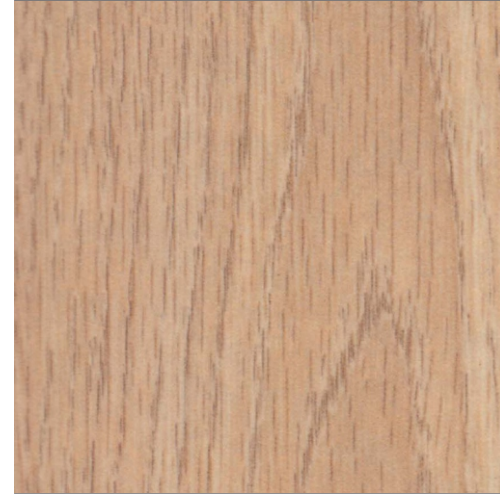
29205-NT



29398-NT



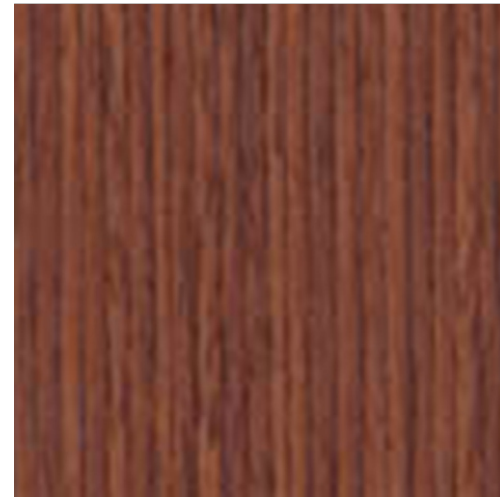
29392-3



27369-3



26213-3



26928-3





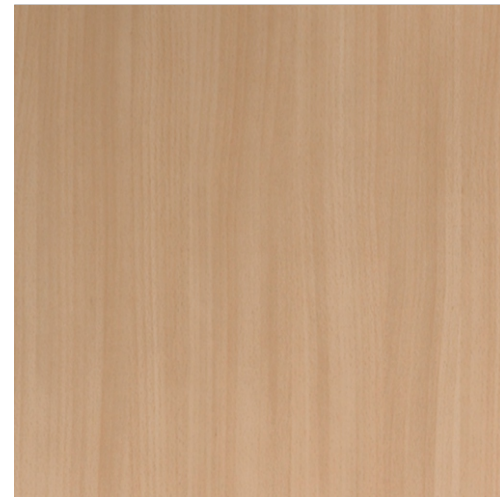
29966-3



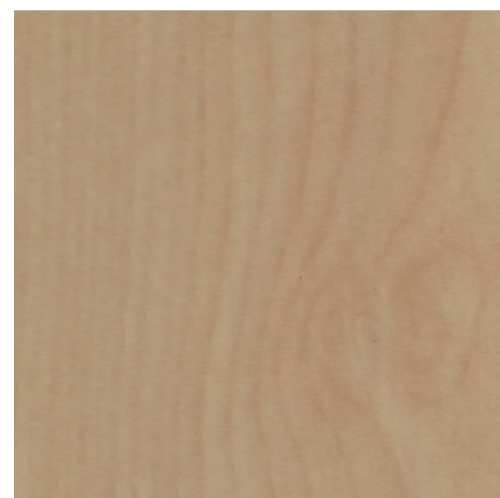
27012-3



519108-3



22726-3



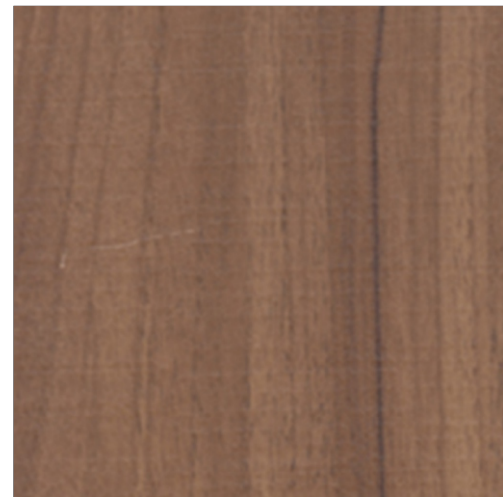
20756-3



25478-3



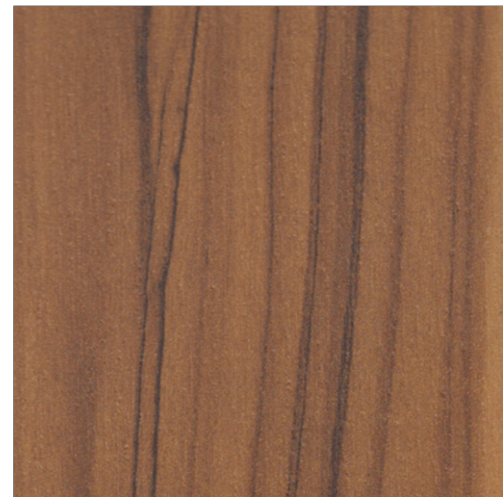
24192-3



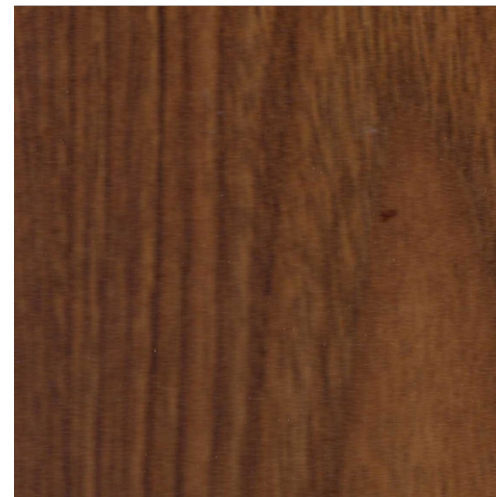
25487-3



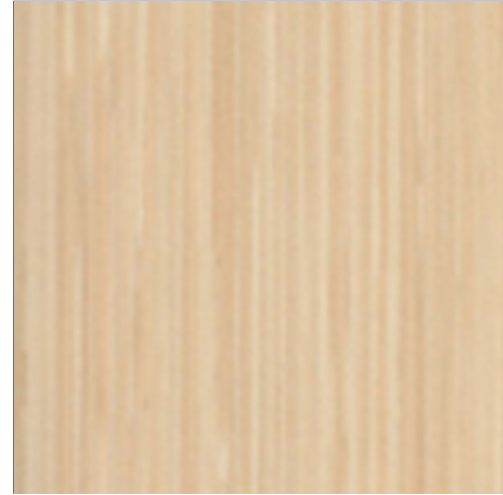
25485-3



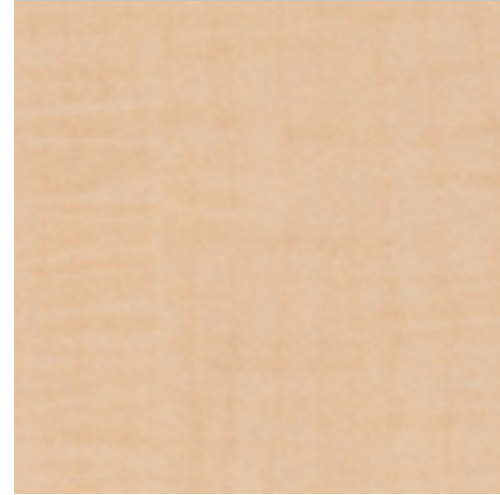
25481-3



27209-3



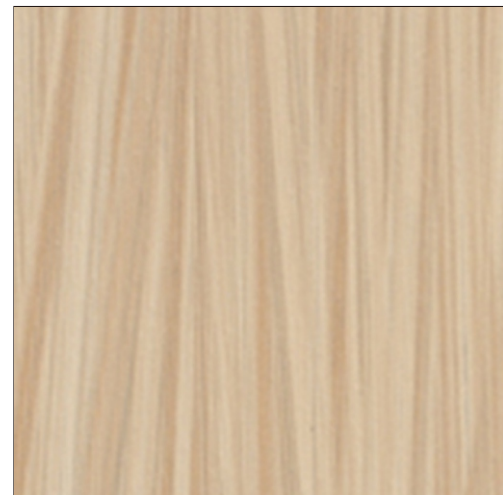
29016-3



21143-3



21395-3



26212-3



27670-3



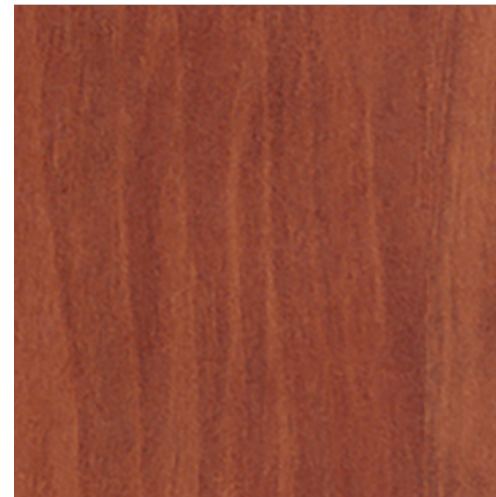
26410-3



26210-3



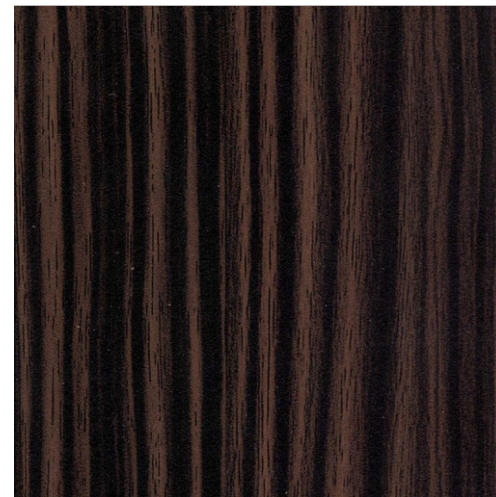
25904-3



63802-3



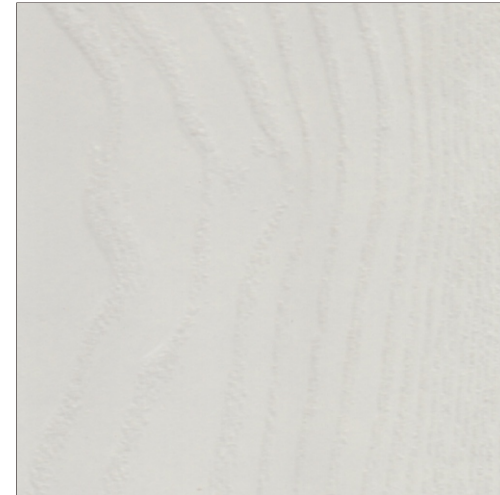
27759-3



29012-3

EMBOSSED LAMINATE  
浮雕系列

----- 自然的紋理 雕刻著歲月



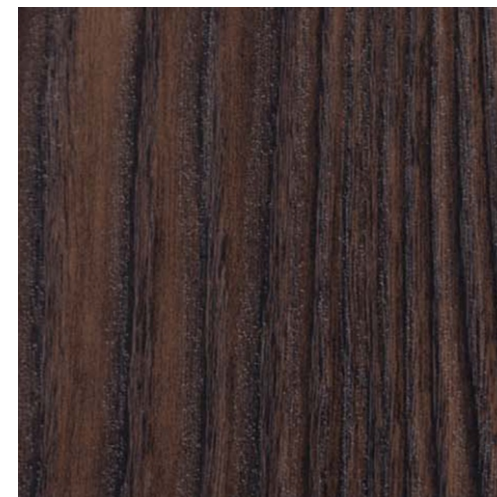
61002-S1



68204-S1



63131-S1



63124-S1





61002-S2



63302-S2



63301-S2



63307-S2





69568-S18



68207-S18



69569-S18



68157-S18





63924-S3



63920-S3



63482-T<sub>1</sub>



63326-S3



20812-T<sub>1</sub>



63328-S3



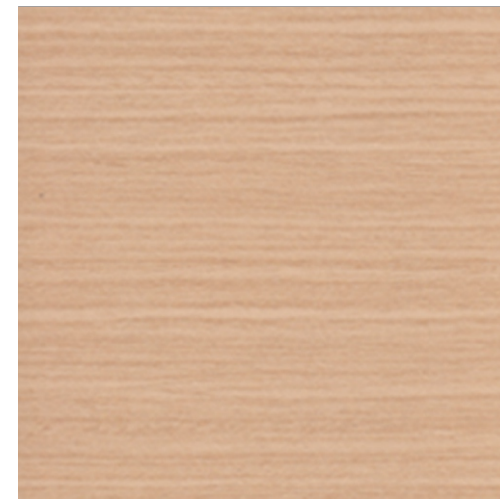
25475-T<sub>1</sub>



25264-T<sub>1</sub>



63443-HNT



63539-HNT



63083-HNT



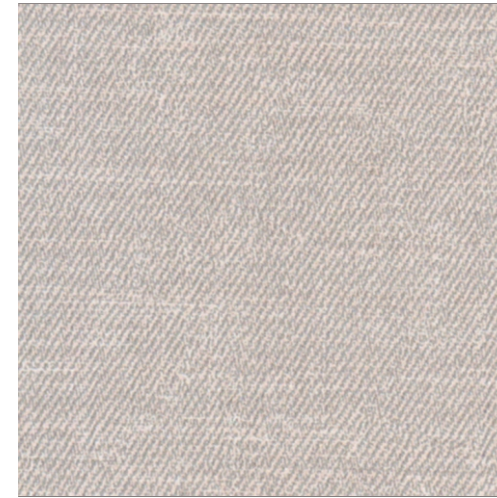
63200-HNT

FABRIC LAMINATE  
布纹系列

-----純樸的質感 溫馨的港灣



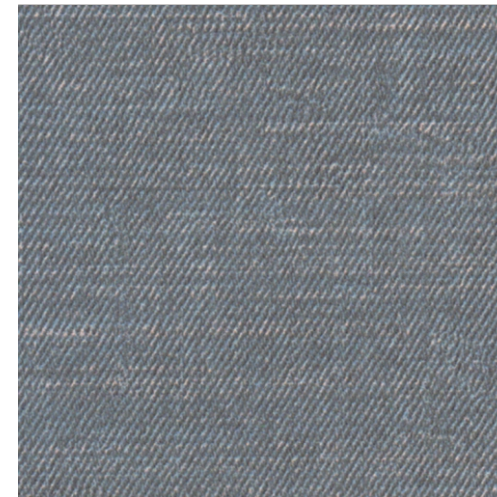
62197



62198



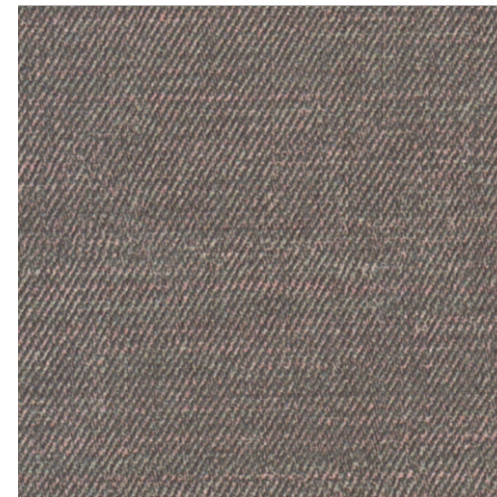
26444



62200



85885-P

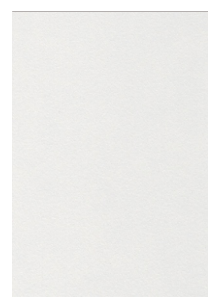


62199

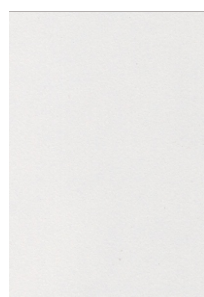
SOLID COLORS LAMINATE

純色系列

----- 色彩斑斕 花樣年華



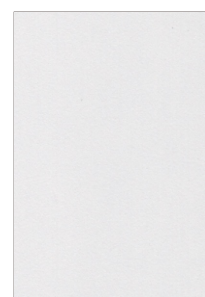
61090



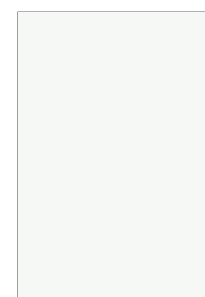
61109



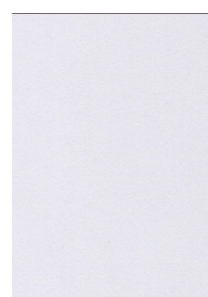
61085



61104



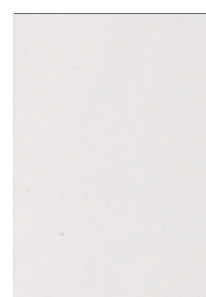
5D354



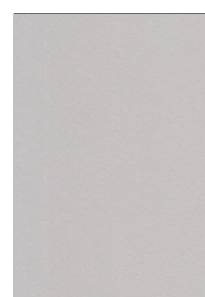
61058



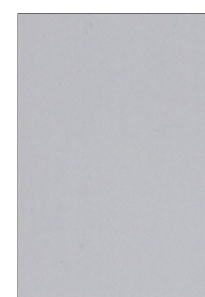
61105



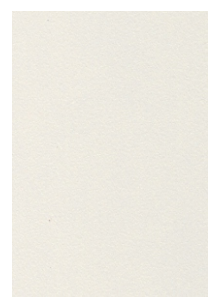
61077



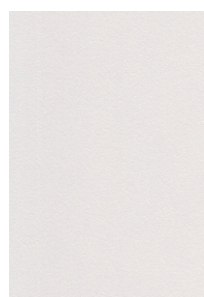
61088



61112



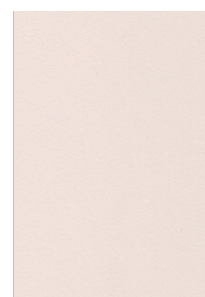
61071



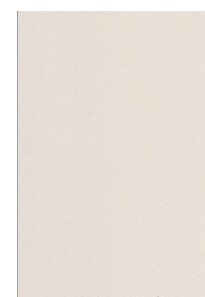
61110



61107



61108



61070



61106



61111



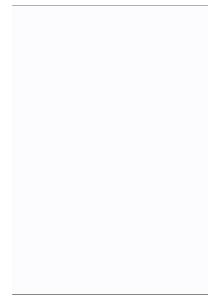
61097



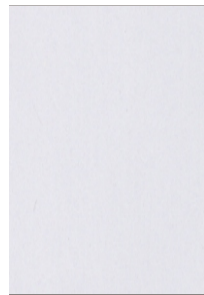
61095



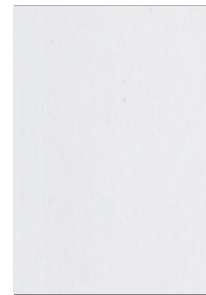
22200



20949



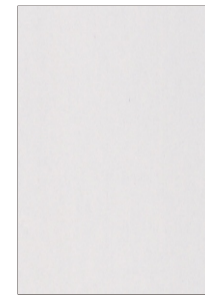
61799



61798



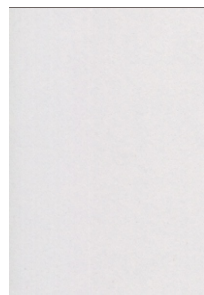
61797



61073



61074



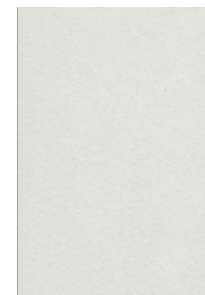
61099



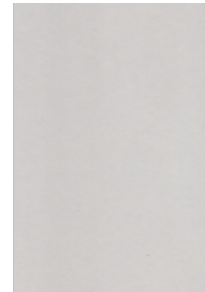
61061



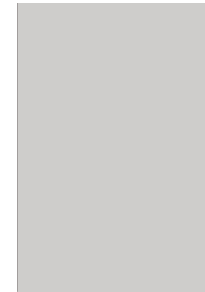
61065



61089



61091



20927



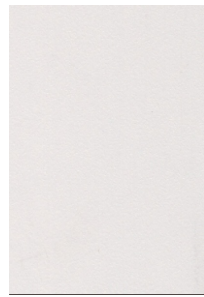
61796



61040



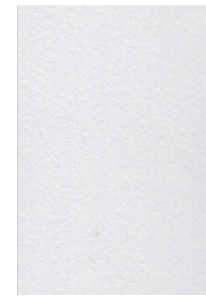
61001



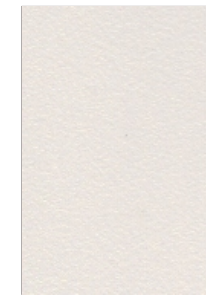
61078



61087



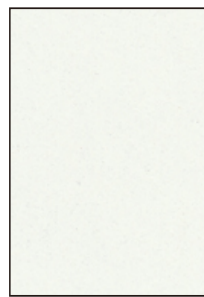
61056



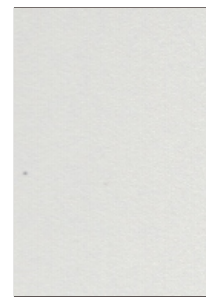
61004



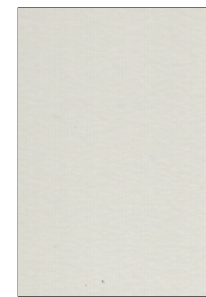
61057



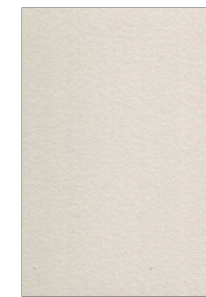
61052



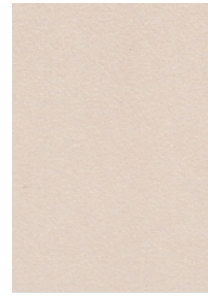
61002



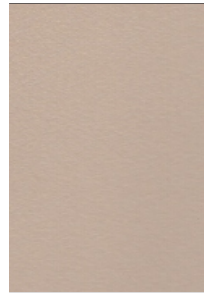
61042



61003



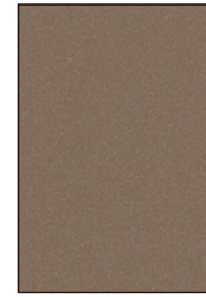
61045



61068



61096



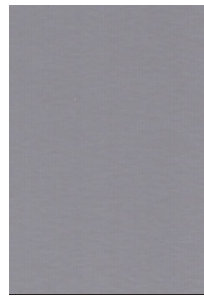
61054



61006



61007



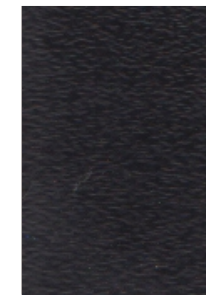
61008



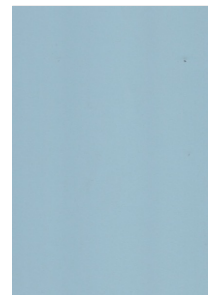
61011



61012



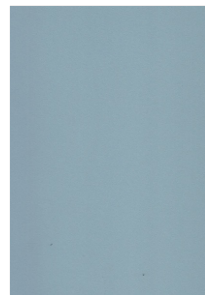
61028



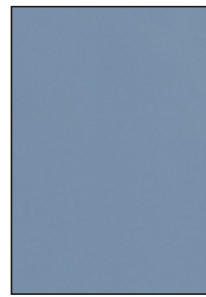
61009



61043



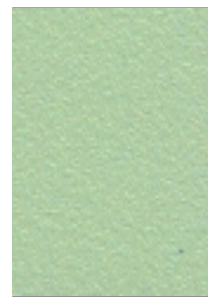
61092



61050



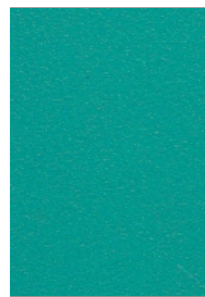
61018



61017



20803



61019



61021



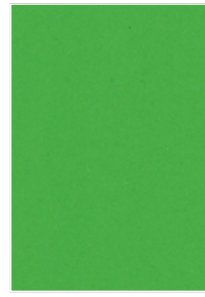
61023



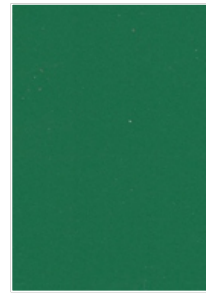
61094



61795



61022



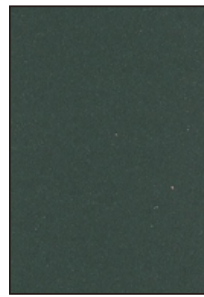
61020



61067



61053



61024



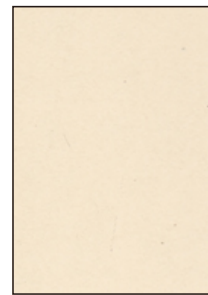
61033



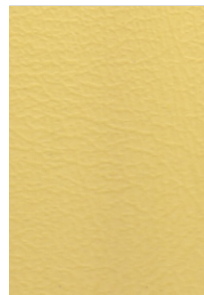
61039



61034



61005



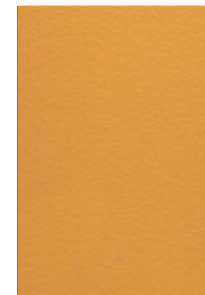
61038



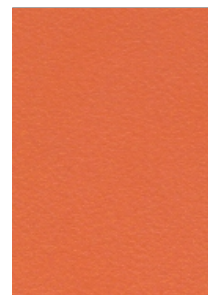
61025



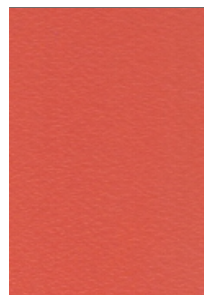
61026



61037



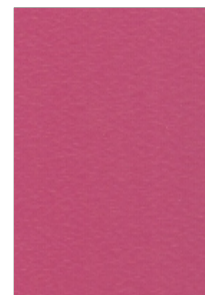
61027



61031



61029



61035



61030



61044



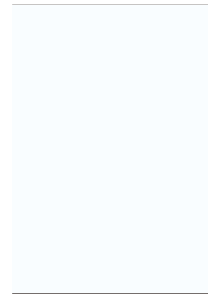
61032



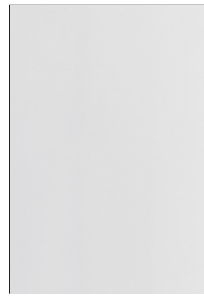
28200



61036



20459



61794



61086



61013



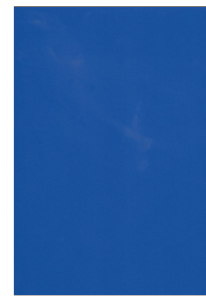
61010



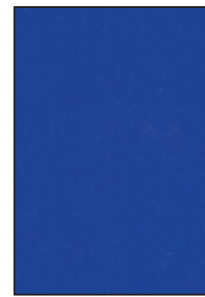
61093



61051



61041



61014



61015



SURFACE TEXTURES  
表面肌理



2



3C



CE



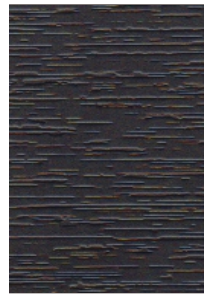
ES



HE



NT



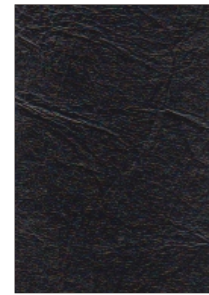
HNT



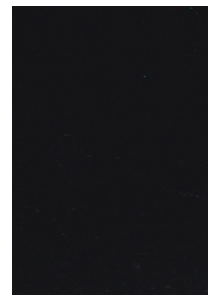
k



Q



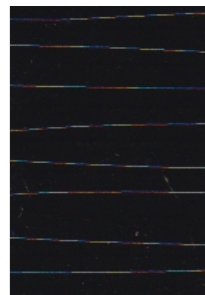
W



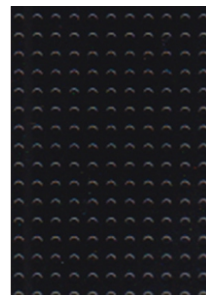
X



Y



z



HI



T1



S1



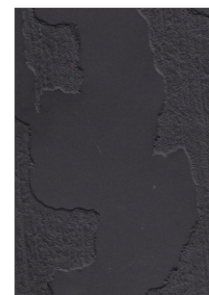
S2



S3



S18



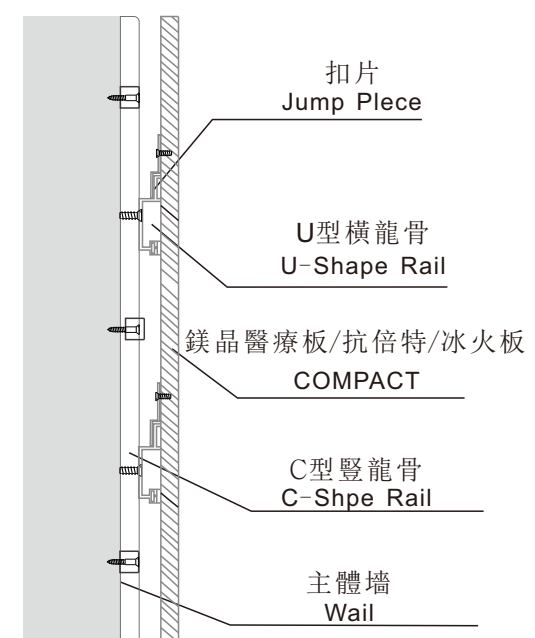
S28



Hong Kong Winfield Laminate are suitable for diverse applications. The collection also provides Compact Internal Corner and External Corner with a series of specifications.

香港溫菲爾德的产品適用於多種領域，包括定制各種尺寸的抗倍特彎角。

### 干挂式安装方式





[www.hkwinfield.com](http://www.hkwinfield.com)